

MEGMEET
WELDING TECHNOLOGY



POWERING THE FUTURE





Content

MEGMEET profile

MEGMEET welding production

MEGMEET globe case sharing

MEGMEET partership activity



Content

MEGMEET profile

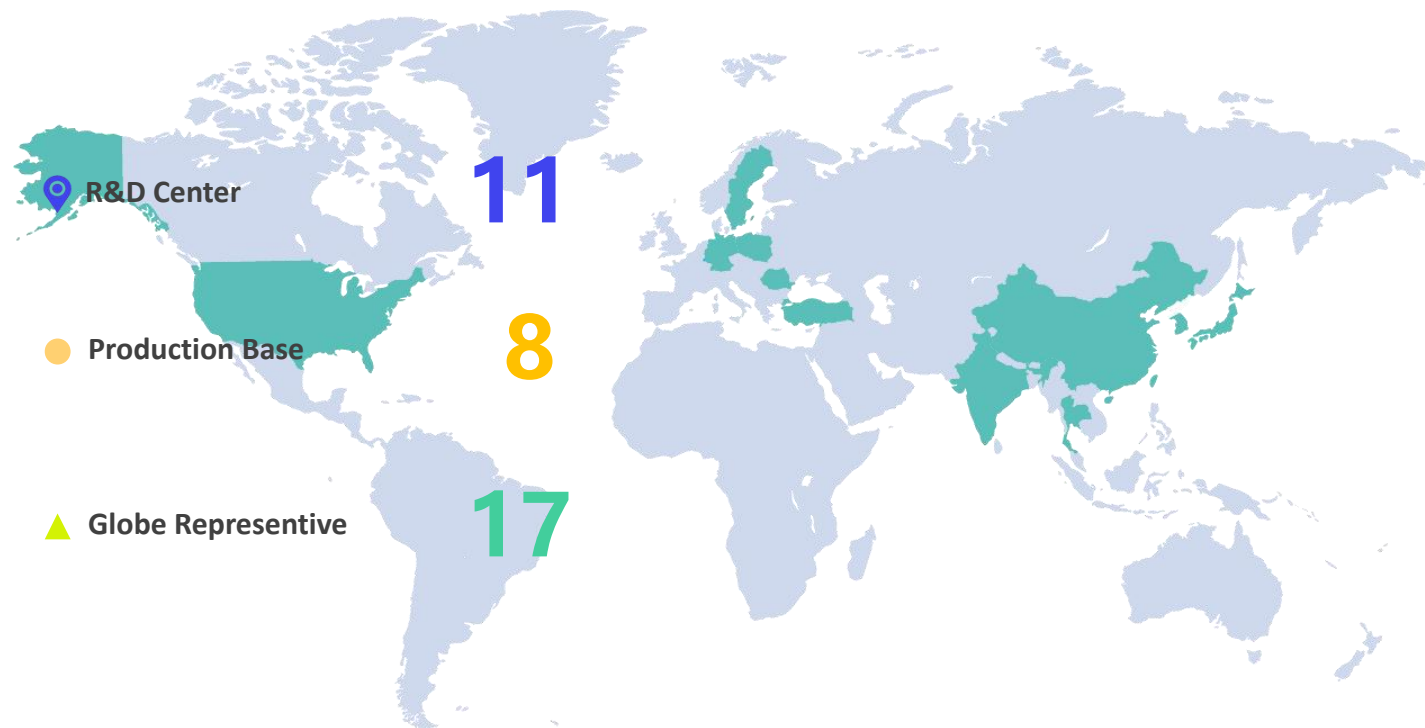
MEGMEET welding production

MEGMEET globe case sharing

MEGMEET partership activity

MEGMEET profile

MEGMEET



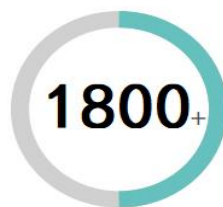
STOCK CODE: SZ 002851



Paid-in Capital



Employees



R&D Engineers

Annual R&D investment \approx Annual turnover \times 10%

© MEGMEET

ALL rights reserved 版权所有 仿冒必究
Company Confidential 公司机密 不得公开



MEGMEET USA INC.



MEGMEET SWEDEN AB



MEGMEET Japan



MEGMEET Turkey



MEGMEET Gernamy GmbH



MEGMEET Poland



MEGMEET Electrical India Pvt Ltd.



MEGMEET (Thailand) CO.,LTD.

Core Business

MEGMEET

Power Supply



- Power Supply for ICT
- Electric Power Supply
- Power Supply for Medical
- Power Supply for Display
- Photovoltaic energy storage system
- OA power supply

Industrial Automation



- Inverter
- Servo
- PLC
- Controller for Injection
- Molding Machine & CNC
- Frame Power Supply
- Integrated Driver for Elevator

EV & Railway



- Drive and Control Modules for EV
- Charging Station Modules
- Drive, Control & AC Modules for Railway

Smart Manufacturing



- Industrial & Digital-control Welding Equipment
- Industrial Microwave System
- Electric Submersible Oil Pumping System
- Optical Fiber Flexible Bend Sensor

Smart Home Appliances



- SMART TV Controller
- HVAC
- Kitchen Appliances
- Smart Sanitary Ware

Precision connection



- FFC Ribbon cable
- FPC
- coaxial cable
- enamelled wire

© MEGMEET

ALL rights reserved 版权所有 仿冒必究
Company Confidential 公司机密 不得公开

Chairman & CEO



CEO
Dr. Tong

- PhD of Nanjing University of Aeronautics and Astronautics
- Post-doctoral in power and control electronics in Zhejiang University
- The first batch of post-doctoral in Shenzhen.
- Joined HUAWEI in 1996 , and served as Vice President of HUAWEI Electric Technology Co., Ltd.
- Represented HUAWEI to negotiate with Emerson and closed the US\$750 million acquisition of HUAWEI Electric. Joined Emerson Network Power Co., Ltd. as Vice President afterwards.
- Co-founding MEGMEET in 2003 and lead the company to become a public company in 2017.
- Represented MEGMEET to negotiate with Emerson and take over the product line and team of welding equipment.



MEGMEET

MEGMEET Welding Technology History

MEGMEET



MEGMEET

Dear Emerson Customers and Resellers,

Emerson Network Power Co., Ltd. (Emerson) and Shenzhen Megmeet Electrical Co. Ltd. (Megmeet), today announced that Megmeet has acquired full ownership of "Welding System" business of Emerson. This acquisition covers the merging of Emerson Network Power "Welding System" team, tangible assets and intangible IP assets into Megmeet. Megmeet will continue to provide quality "Welding System" products and services for customers, and take responsibilities in the operation of "Welding System" business.

尊敬的客户及经销商：

今天，艾默生网络能源有限公司（艾默生）和深圳麦格米特电气股份有限公司（麦格米特）联合宣布：麦格米特全面收购了艾默生旗下“电焊机”业务。收购内容涵盖“电焊机”业务运营团队、有形资产及无形资产。今后“电焊机”业务及服务均由麦格米特全权负责，并由麦格米特为客户提供优质的产品和服务。

Emerson Network Power Co., Ltd.

艾默生网络能源有限公司
(公章)

Shenzhen Megmeet Electrical Co., Ltd.

深圳麦格米特电气股份有限公司
(公章)

2011-11-30

艾默生网络能源有限公司
深圳市南山区科技工业园
科发路一号
邮编 518057

电话 86-755-86010808
传真 86-755-86010909

深圳麦格米特电气股份有限公司
电话 86-755-8660 0500
传真 86-755-8660 0999

深圳市南山区科技园北区朗山路
紫光信息港 5 楼
邮编 518057

On Nov 30th, 2011, EMERSON and MEGMEET announced that MEGMEET has acquired the full ownership of "Welding System" business, including the team, tangible and intangible IP assets from Emerson Network Power Co., Ltd.



MEGMEET in GERMANY

Local warehouse support fast delivery to Europe within 7 Days

MEGMEET



MEGMEET WELDING TECHNOLOGY

DR. W. LANGE, EB-Anlagen, beginnen mit dem Zerschneiden. Das muss der Kunde mitbringen, da er es braucht oder es hat. Informationen zum L&S-Schweißverfahren unter dem Link <https://www.lsg.de/de/technologieberatung/welding> (Such: Prozessanleitung L&S Code, Herstellungs)

Dr. Christian Ober, CEO der L&S V. GmbH

...ander eine 1 mm tiefe Schweiß-Chrome-Nickel-Stahl bringen muss, wobei vom L&S-Schweißen ein

fallrisiko minimieren: Blechteile her lagern, transportieren und arbeiten

... sind im Leichtbau und als Design-... unterhalb. Der Umgang mit Halblagen aus Metall bringt allerdings mit sich. So kann es unter... in mechanischen Gefährdungen... Teile mit scharfen Kanten oder... Arbeitsschutz und in Gefährdungen... der Arbeit an Maschinen, zum Beispiel elektrischen Schlag oder Licht... Grundzüge für das sichere... mit Blechen sind die Gefährdung... Behandlung, Betriebsanweisungen... erweisen. Martin Schöten vom... spezialisierten Blechbearbeitung der... Holz und Metall... alle Tipps, was bei Arbeit mit... sind Anfahrgefahr und Beschäftigte... hinaus besonders achten sollten.

von Blechen und Coils
... Probleme, beispielsweise vertikale... Stöße, Schallimpulse oder Blech... wegen für eine hohe Lager... können stehende Bleche nicht... Coils aus Stahl, die von... Befestigung werden und in denen... Coils durch Absteckstangen... werden, geben als robust und... Mit beweglichen Geländem... "eingesetzt werden... Anlagen" im Brandfall insbesondere... für Gefahren

Bechttransport - sicheres Heben und Wenden
Handlungen, Handlager und Transport sind Beispiele für Hebe- und Transportarbeiten mit Blechen. Für den Transport schwerer Bleche kommen Hebezeuge und Transportgeräte zum Einsatz. Werden Bleche und Coils mit einem Kran transportiert, sind in der Regel besondere Lastfallmaßnahmen, zum Beispiel Klauen, Protzen oder Zangen, das Mittel der Wahl. Protzen und Zangen sind in der Regel so leicht als wie Blechbalken. In der Regel können Bleche auch gut mit Vakuumhebern gehandhabt werden. Man sollte sich bewusst sein, dass Vakuumhebern warmen davor, dass Vakuumhebern nicht mehr ausgeglichen werden können. Lasthebegeräte reduzieren Unfallgefahren beim Anlagern oder Lösen können. Die Auswahl von Magneten von Anschlagmitteln oder Lastfahrlagen... ist die Auswahl von Magneten... aufgrund ihrer Vielfalt und spezifischen... ihrer Nutzung sicherzustellen mit dem... Magnetenhersteller abzustimmen, erhaltene... Schritte. Grundsätzlich gilt: Lassen die

MEGMEET
Klassischer
Schweißanforderungen, multiple
Lösungen von MEGMEET

- Hervorragende Wahl für
Roboterschweißen
- Professionelle Schweißprozesssteuerung
- Qualität & Zuverlässigkeit
- Energieeffizienz & digitale Steuerung

MEGMEET Germany GmbH
Münsterstr. 44
33017 Bielefeld
Deutschland
Tel. +49 521 948 121 52
E-Mail: info@megmeet.com
<https://www.megmeet-welding.com/en>



MEGMEET in THAILAND



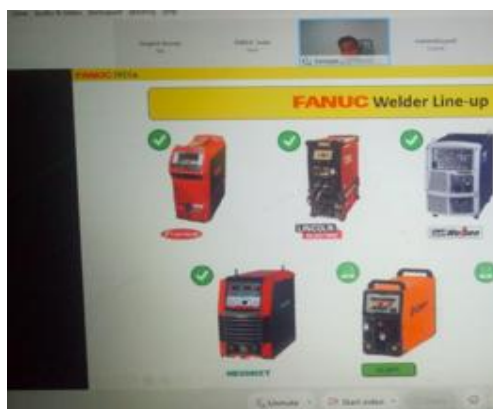
Rayong-Thailand Factory

MEGMEET



© MEGMEET

ALL rights reserved 版权所有 仿冒必究
Company Confidential 公司机密 不得公开



MEGMEET WELDING TECHNOLOGY

Digital-control MIG/MAG Welding System
Your Professional Partner for Aluminum Welding

- ★ Pulse / Double Pulse MIG/MAG for Aluminum
- ★ Short-arc Pulse / Double Pulse MIG/MAG for Aluminum
- ★ Supporting Push-pull Torch
- ★ Intermediate Wire Feeder for Aluminum Welding of Large Work-pieces

MEGMEET Electrical India Private Limited
Contact Person: Mr. Anoop Singhal; Mob: +91-9310351857; Email: anoop@megmeet.com;
Add: Plot No. 140, Sector 7, IMT Manesar, Gurugram - 122052

MEGMEET in TURKEY



MEGMEET



MEGMEET in POLAND



MEGMEET



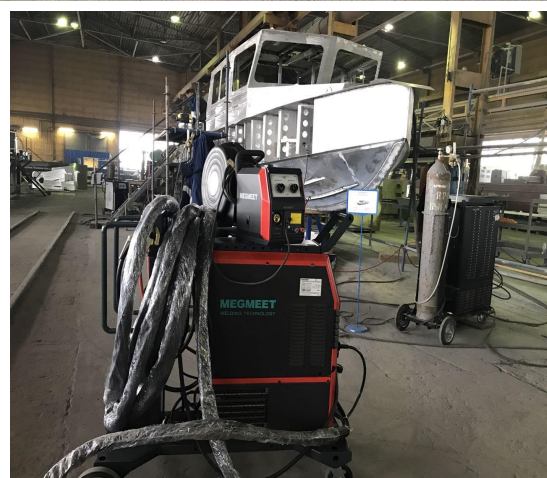
© MEGMEET

ALL rights reserved 版权所有 仿冒必究
Company Confidential 公司机密 不得公开

MEGMEET in RUSSIA



MEGMEET



ALL rights reserved 版权所有 仿冒必究
Company Confidential 公司机密 不得公开







Traditional & New social media marketing promotion

MEGMEET



© MEGMEET

ALL rights reserved 版权所有 仿冒必究
Company Confidential 公司机密 不得公开

Strong brand influence to make sales more easily

MEGMEET



FANUC

KUKA

YASKAWA

ABB

Kawasaki

Strategic Partnership between FANUC & Megmeet

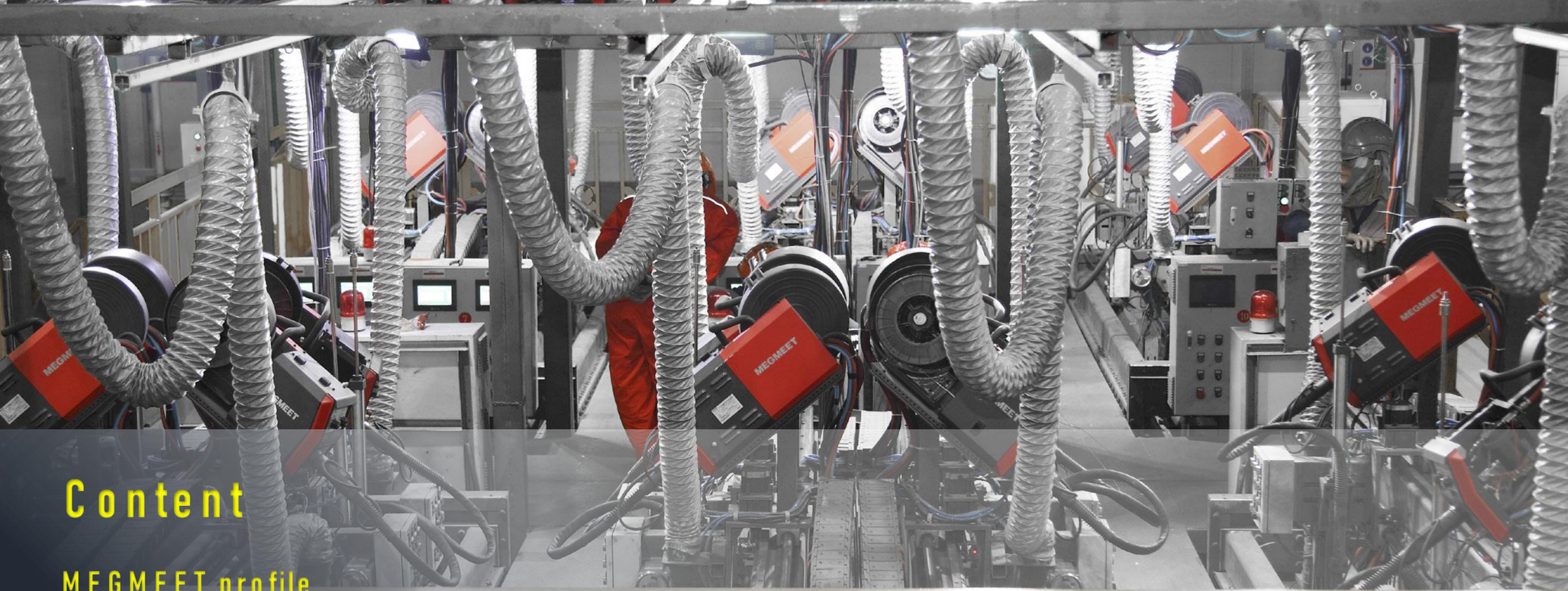
MEGMEET



ALL rights reserved 版权所有 切勿外泄
Company Confidential 公司机密 不得公开

Slide 19

Megmeet Welding Tech.&Chinese Fanuc Robot reached official strategic cooperation from 2015 till now.



Content

MEGMEET profile

MEGMEET welding production

MEGMEET globe case sharing

MEGMEET partership activity

MEGMEET Welding Brand Positioning



respect but fearless **substitution solution**

Robotic Welding Power Source

MEGMEET

Embedded-Type communication module supports multiple types of communication protocols



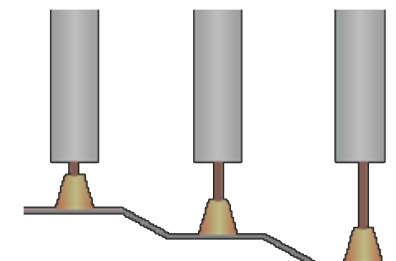
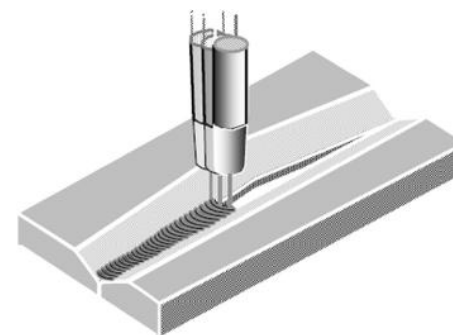
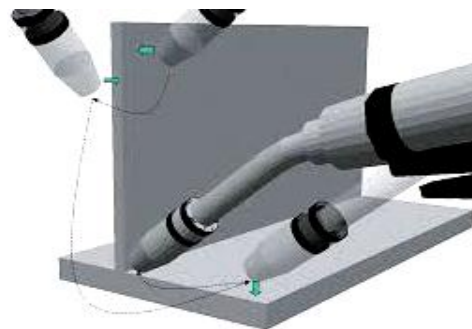
© MEGMEET

ALL rights reserved 版权所有 仿冒必究
Company Confidential 公司机密 不得公开

Robotic Welding Function

MEGMEET

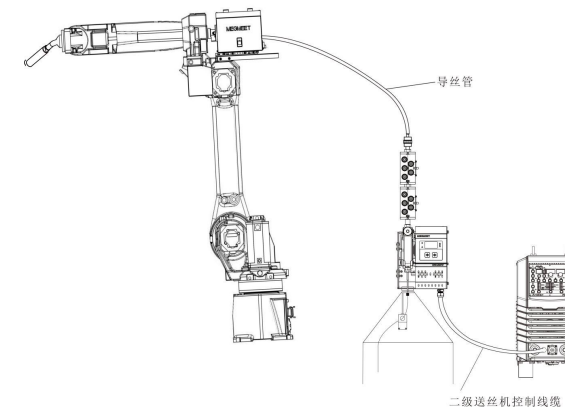
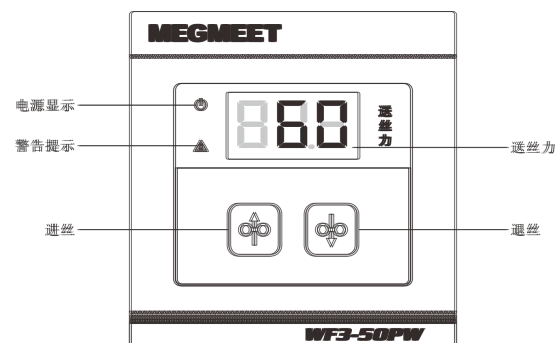
- Touch sensing with high voltage(54V)
- Thru-Arc Seam Tracking(TAST)
- Multi-layer and multi-pass
- Constant penetration function
- Midway wire feeding system



Main Wire Feeder



Midway Wire Feeder



© MEGMEET

ALL rights reserved 版权所有 仿冒必究
Company Confidential 公司机密 不得公开

USB interface upgrade function

MEGMEET



*The advanced welding process and customized function can be updated at any time
Top brands' welding machine = hardware + software
Similar to WINDOWS computer operating system upgrade, from W7,W8 to W10.

© MEGMEET

ALL rights reserved 版权所有 仿冒必究
Company Confidential 公司机密 不得公开

Slide 24

Flexible upgrade from manual to robotic mode

MEGMEET



+



+



+



=



© MEGMEET

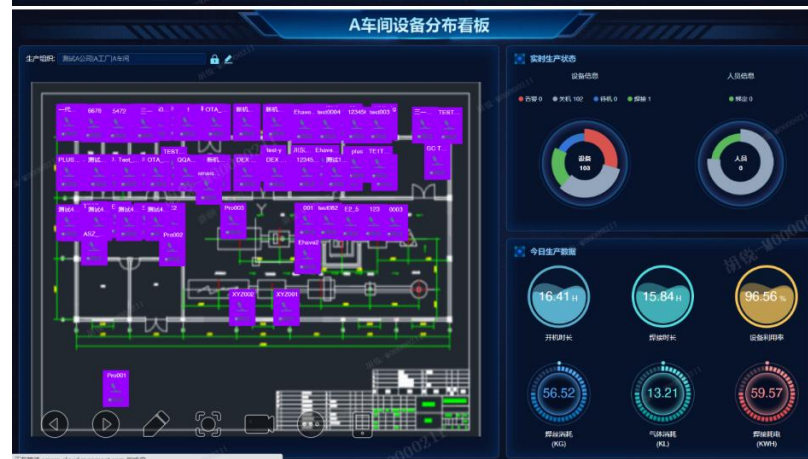
ALL rights reserved 版权所有 仿冒必究
Company Confidential 公司机密 不得公开

Huge potential market for Robotic partner

SMARC™

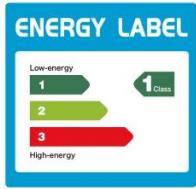
Informatization and IoT Solution for Smart Welding Manufacturing

MEGMEET



Product Series

MEGMEET



Artsen II



Artsen Plus/Pro

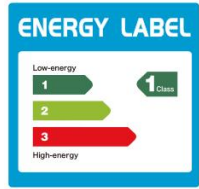


Artsen CM500C



Product Series

MEGMEET



EHAVE MIG



DEX MIG



META TIG



Artsen Mate

RDT Cold Transfer High-speed Servo Welding Technology

MEGMEET



Full Digital Touch Screen Panel

Multiple Language UI

200V-600V Wide Voltage Range

AC&DC Retract Droplet Transfer

Max 700A output current

© MEGMEET

ALL rights reserved 版权所有 仿冒必究
Company Confidential 公司机密 不得公开

Super-stable Fiber Laser Welding Machine

1.5KW / 2KW / 3KW

Be suitable for robotic and handheld laser welding



MEGMEET

Applicable materials:

**Carbon steel
stainless steel
aluminum alloy
brass
red copper
pickling plate
galvanized plate
silicon steel plate
electrolytic plate
titanium alloy
manganese alloy
other metal materials**

SA 1000/1250

MEGMEET

Submerged-arc welding dedicate for shipyard & Steel Structure & Vessel application



Multiple Function SAW/Gouging /MMA

USB Software Upgrade

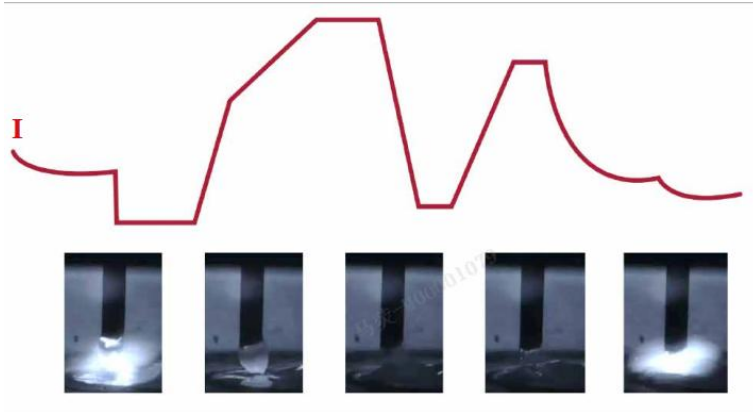
Efficiency >91%

SMARC IOT

Welding Program 1

MEGMEET

Tranquil Fusion Extremely Low Spatter



- Soft welding arc with tranquil welding pool and superbly low spatter.
- The welding energy is subject to adjustment. Heat input can be effectively reduced.
- Remarkable welding junction with lowered defects of blowhole and undercut. Suitable for high quality root welding at all welding positions.
- The welding speed is significantly increased.



Welding Program 1

Tranquil Fusion Extremely Low Spatter



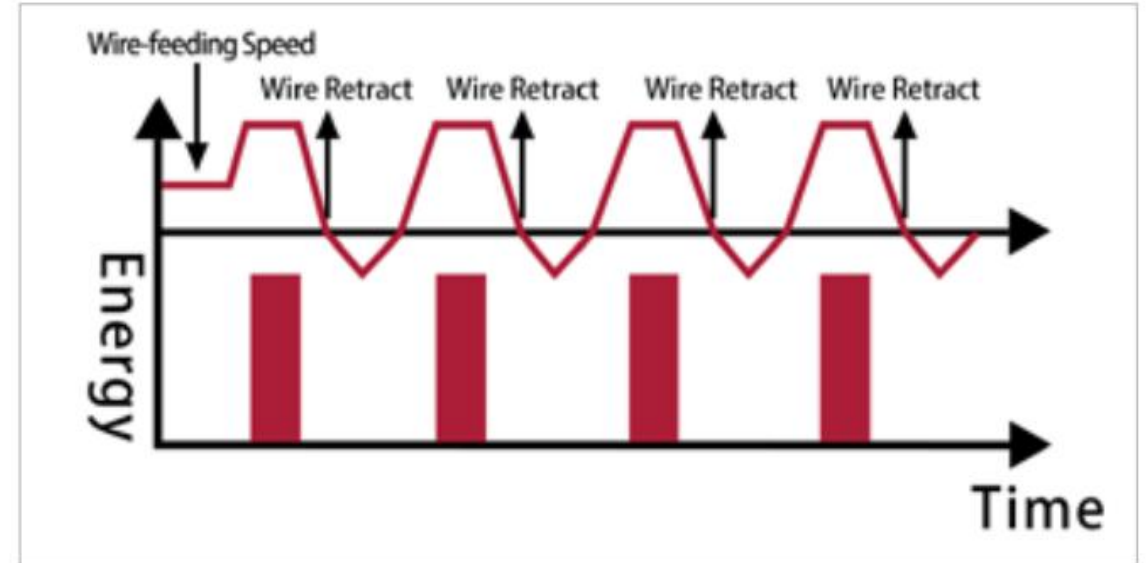
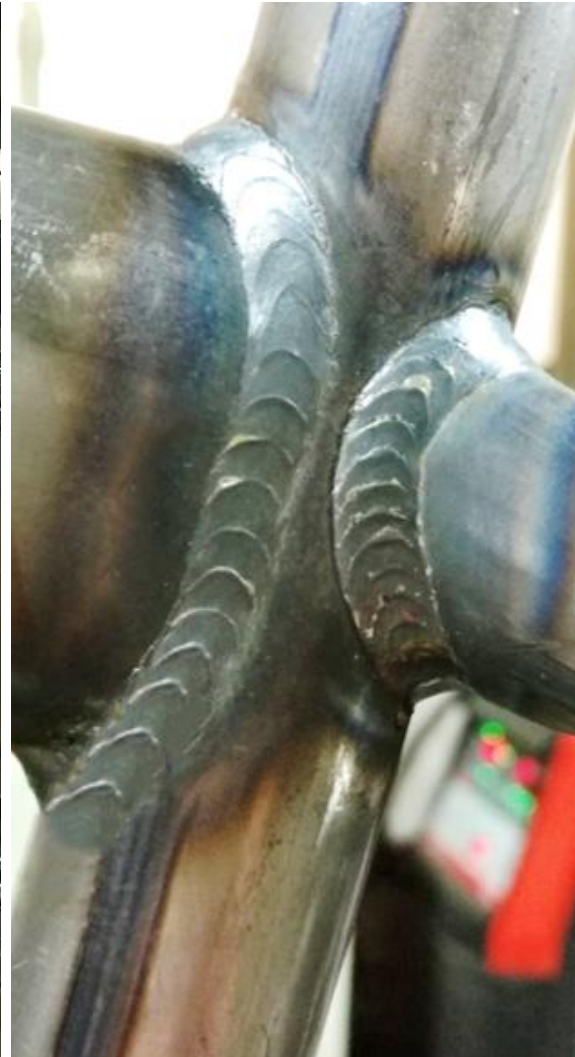
© MEGMEET

ALL rights reserved 版权所有 仿冒必究
Company Confidential 公司机密 不得公开

*video

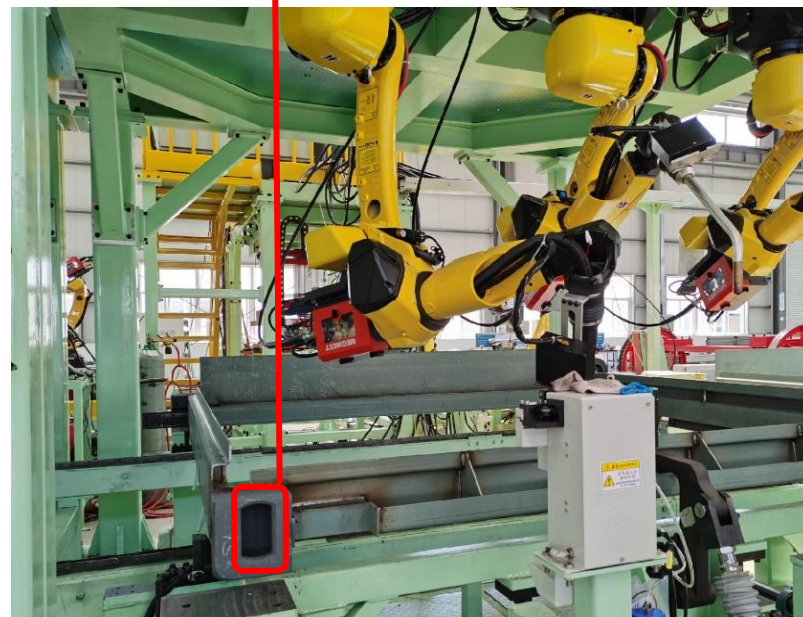
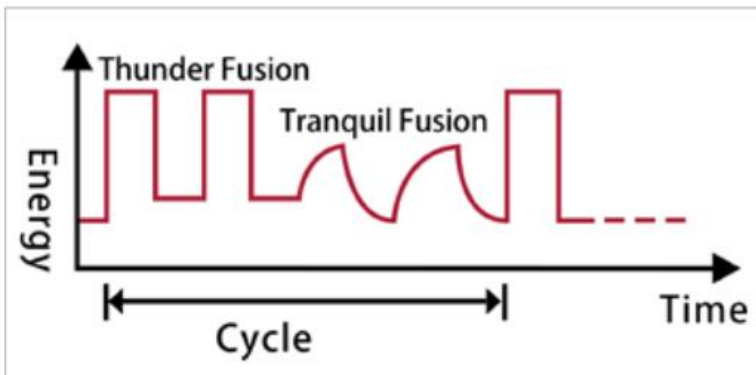


*Germany ESSEN Exhibition in 2017



Process characteristics:

1. Ignition time starts quickly, and ends sharply. The molten pool can be formed quickly, with extremely low heat input and deformation.
2. With clear fish scale pattern and fast welding rhythm, the welding speed is 2~3 times faster than traditional spot welding.
3. High tolerance over inconsistent cutting results. Very suitable for welding of gaps and at all-position.
4. Suitable for the bicycle industry where fish-scale results are requested for carbon steel.

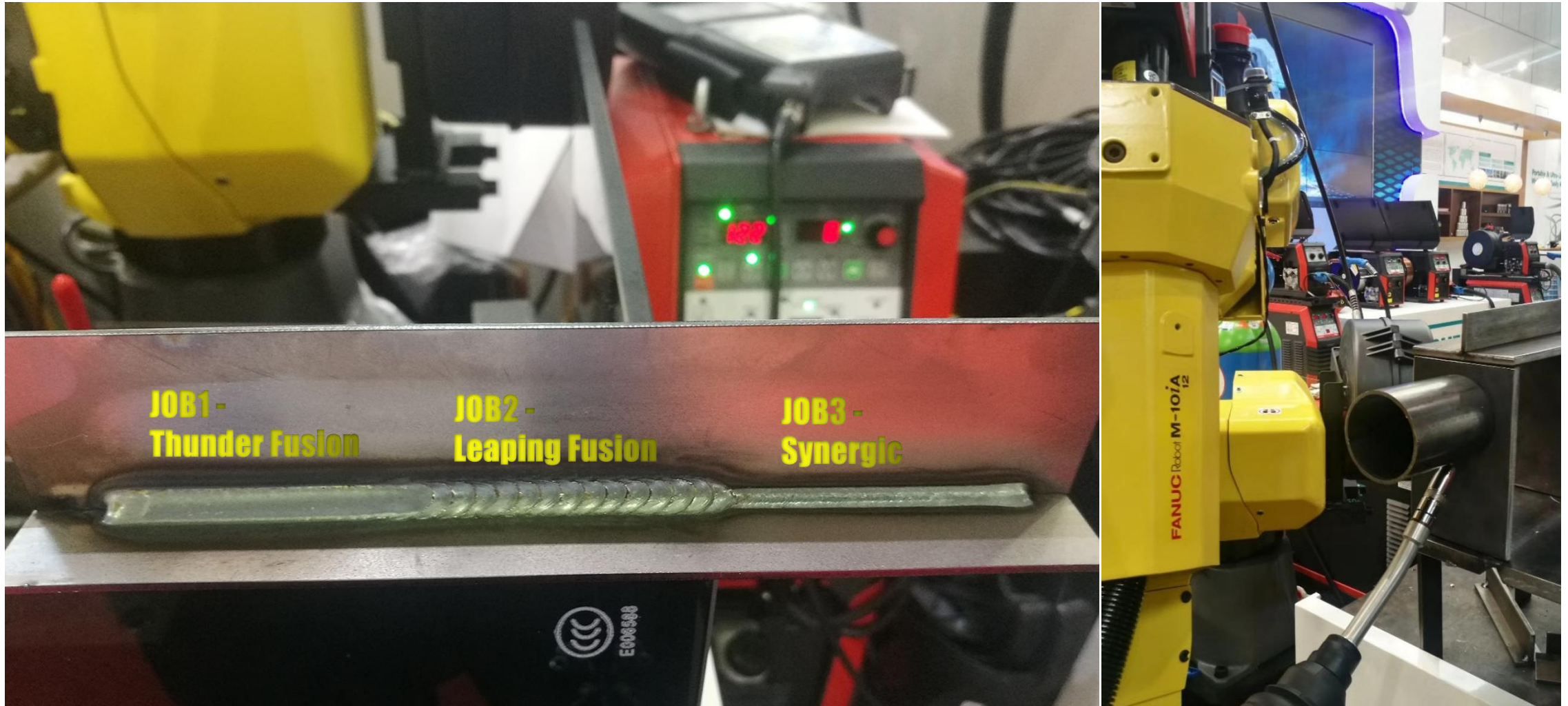


Vertical-up welding without weaving

All-position welding

Instant Switch between Welding Jobs

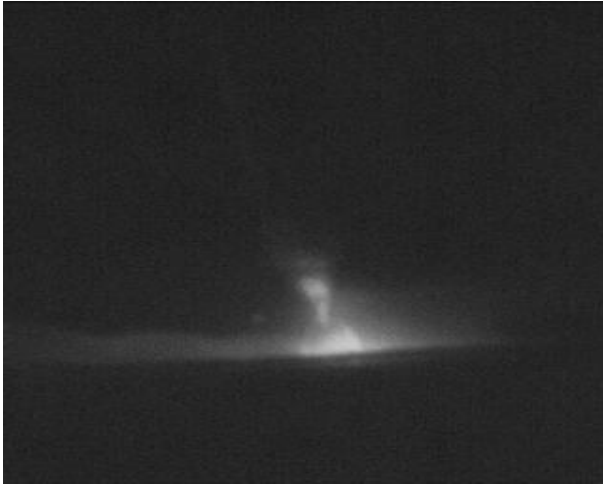
MEGMEET



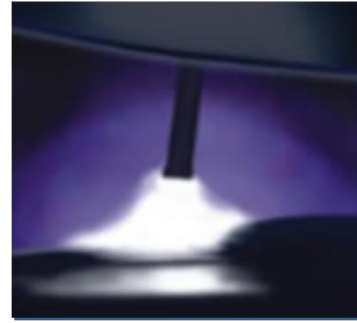
Only one arc ignition is needed to achieve rapid switch between different welding jobs. It can be flexibly applied according to the on-site working conditions, and it is out of doubt in terms of quality, effect and efficiency!

Welding Program 4

Thunder Fusion Short Arc Pulse



The perfect combination of "pulse" and "synergic" welding speed and depth of penetration increased, with more stable arc.



VS



Thunder Fusion

Traditional Pulse

- ✓ Better Thru-Arc Seam Tracking (TAST) directivity
- ✓ Short droplet transition distance and strong anti-interference ability
- ✓ Lower spatter, lower heat input, less undercut
- ✓ Higher deposition rate under the same heat input
- ✓ Torch consumables are more durable and cost-effective
- ✓ High power utilization



*Megmeet (Shanghai) 2017
New Product Launch



© MEGMEET

ALL rights reserved 版权所有 仿冒必究
Company Confidential 公司机密 不得公开

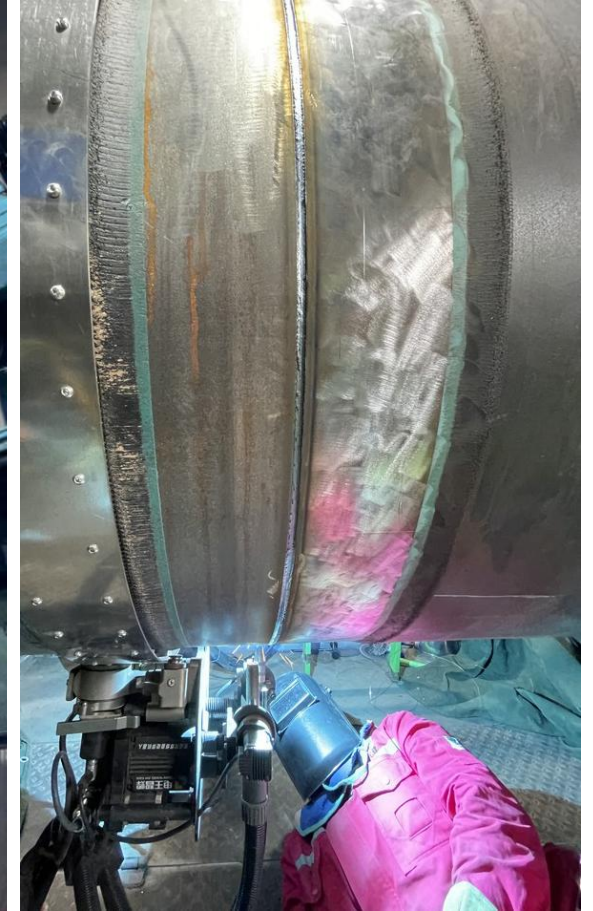
*video

Welding Program 4

Thunder Fusion

Short Arc Pulse application

MEGMEET



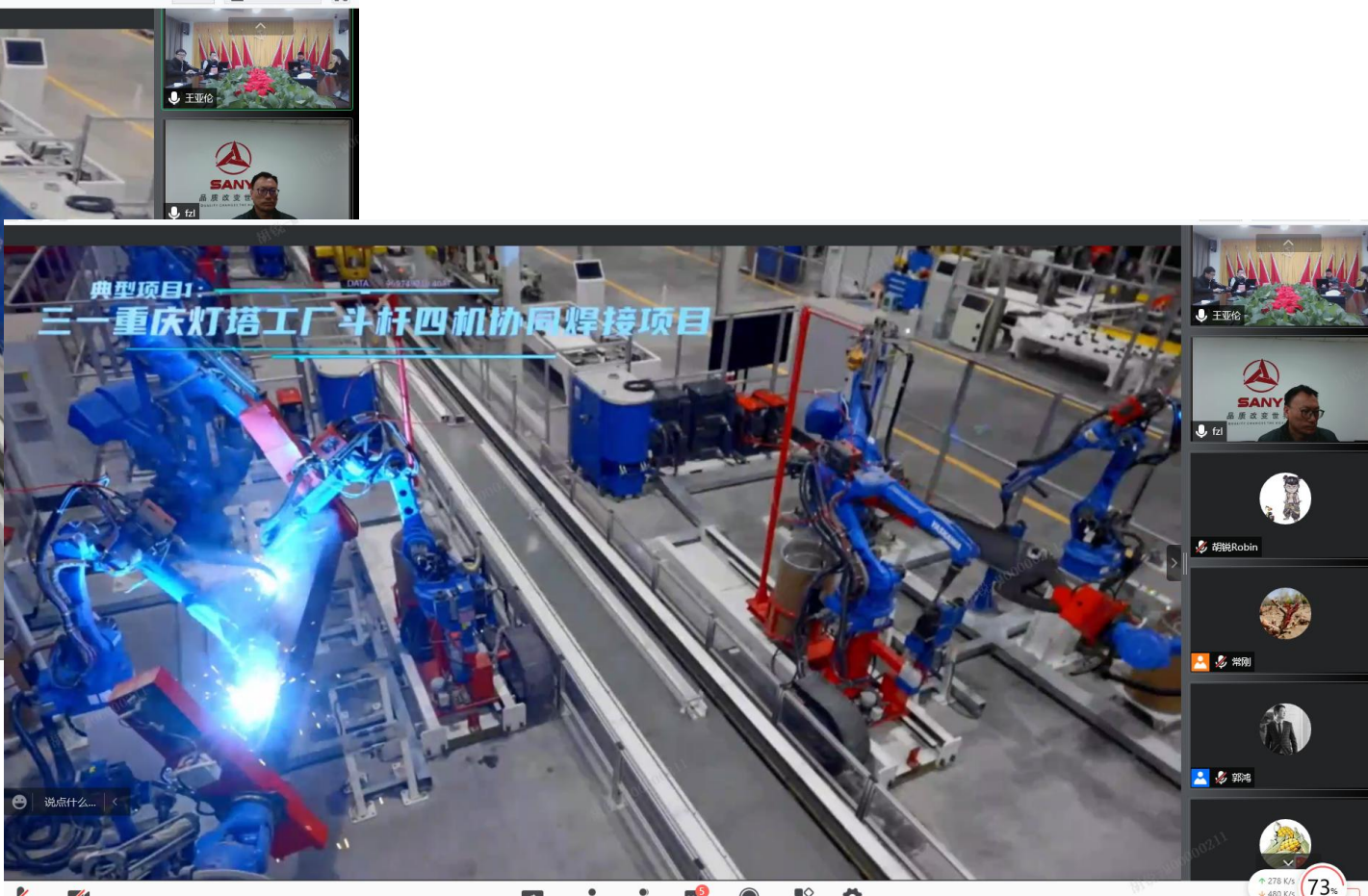
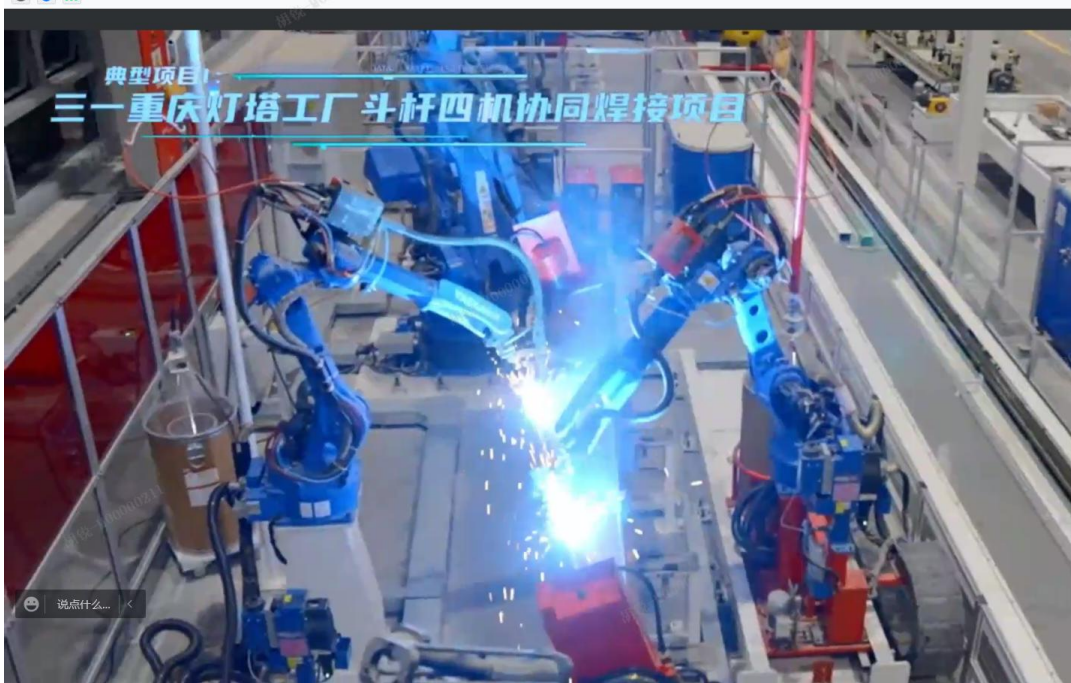
ALL rights reserved 版权所有 仿冒必究
Company Confidential 公司机密 不得公开

All Position Welding for Pipeline

Slide 39

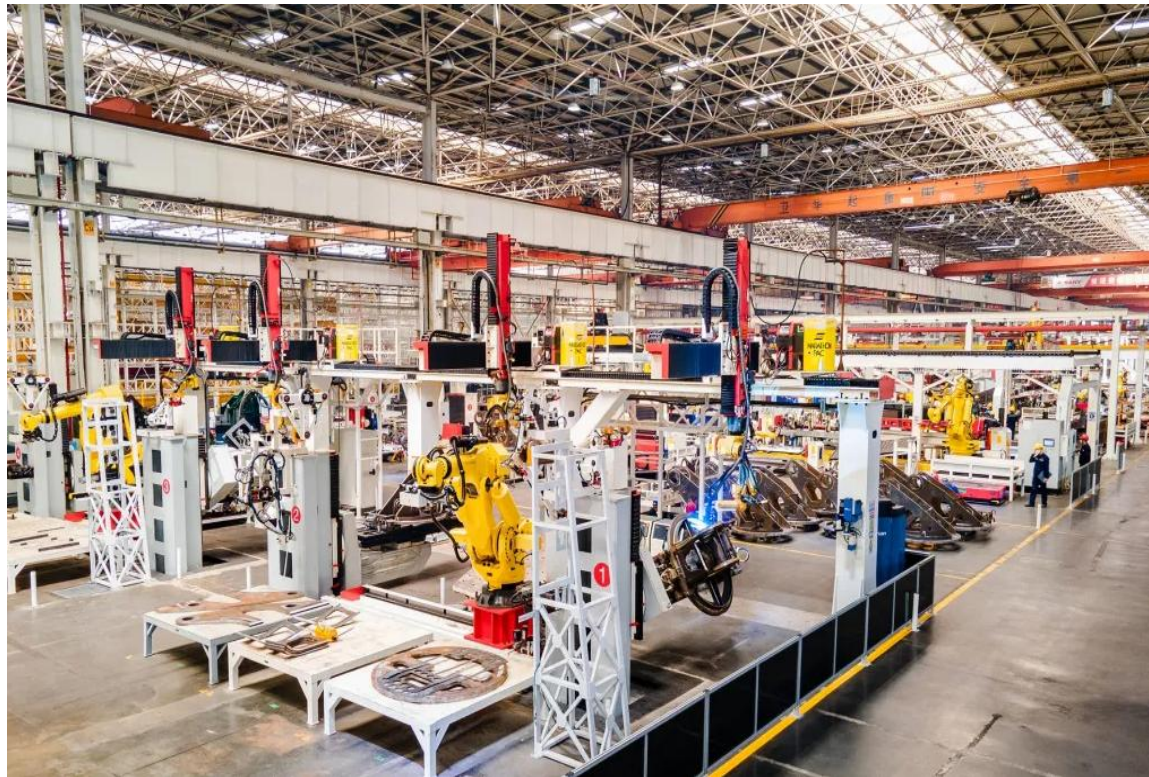


SANY Group Centralized procurement project / 3000+ pcs welding machines / 1500+ pcs robotic welding machines / SMARC remote control system



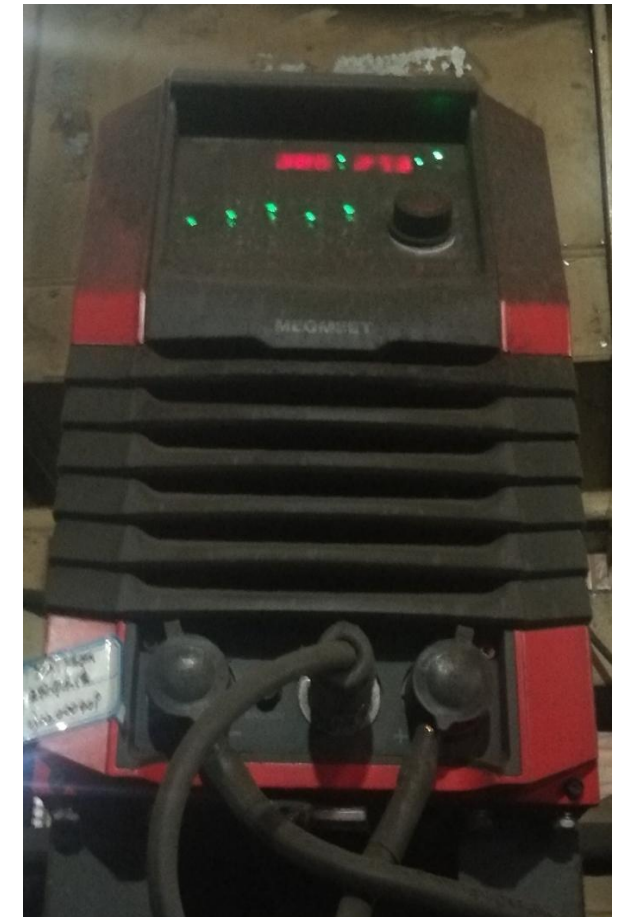


SANY Group Centralized procurement project / 3000+ pcs welding machines
/ 1500+pcs robotic welding machines / SMARC remote control system



Reliability - Under Tough Conditions

MEGMEET



Conductive dust, salt spray test. The picture above is equivalent to ten years later, without any protection.

The performance is good and can still work normally.

© MEGMEET

ALL rights reserved 版权所有 仿冒必究
Company Confidential 公司机密 不得公开

Reliability - Under Tough Conditions

MEGMEET



LabTester Smart-Computer Series

THS										
温度	PU	26.48	℃	湿度	PU	-	-	%		
G.PGM	程式編輯			循環: 1						
階段	溫度	℃	溫度	%	時間	H:m	P1	P2	P3	T/H
1	-40.00		0.0		1:0	0	0	0		N
2	-40.00		0.0		1:0	0	0	0		N
3	50.00		95.0		1:5	0	0	0		N
4	50.00		95.0		1:0	0	0	0		N



© MEGMEET

ALL rights reserved 版权所有 仿冒必究
Company Confidential 公司机密 不得公开

Reliability - Under Tough Conditions

HALT Highly Accelerated Life Testing



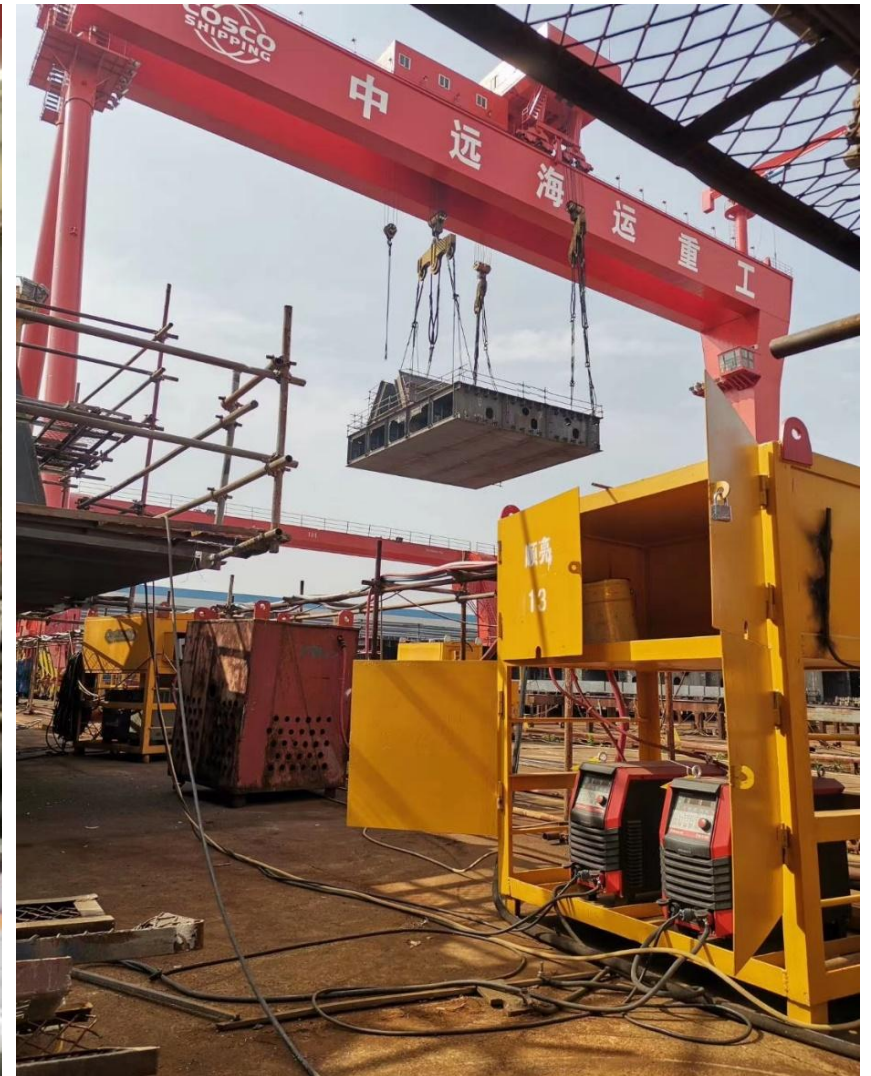
MEGMEET

Gradually increase the severe environmental stress to conduct destructive tests, and accelerate the exposure of potential shortcomings in product design for analysis and improvement.

Including but not limited to: Dust, salt spray, vibration, high and low temperature conversion, power conversion for long-term output, and simultaneous loading.

Stability and Reliability

COSOC Shipping



Stability and Reliability

CHIWAN Sembawang Engineering



Stability and Reliability

Shipbuilding



揚子江船業集團公司
YANGZIJIANG SHIPBUILDING GROUP LTD.



新時代造船



© MEGMEET

ALL rights reserved 版权所有 仿冒必究
Company Confidential 公司机密 不得公开



Content

MEGMEET profile

MEGMEET welding production

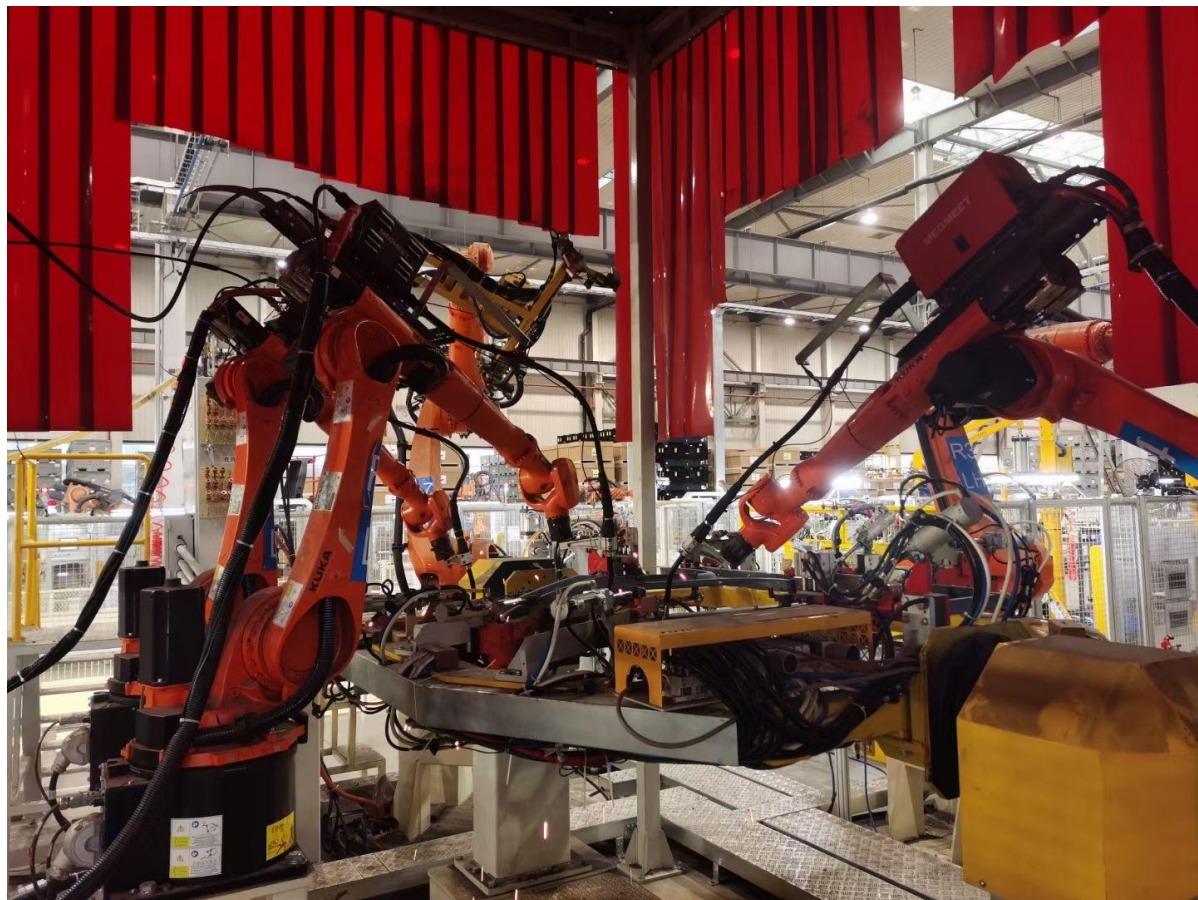
MEGMEET globe case sharing

MEGMEET partership activity

Successful Cases

Body Side Outer Panel for TESLA MODEL Y

MEGMEET



© MEGMEET

ALL rights reserved 版权所有 仿冒必究
Company Confidential 公司机密 不得公开



Slide 49

Successful Cases

Chassis System for BMW

MEGMEET



© MEGMEET

ALL rights reserved 版权所有 仿冒必究
Company Confidential 公司机密 不得公开



上海汇众



Successful Cases

Frame White body for LYNKCO

MEGMEET



LYNK&CO

Successful Cases

MEGMEET



Galvanized sheet Parts for NIO EV

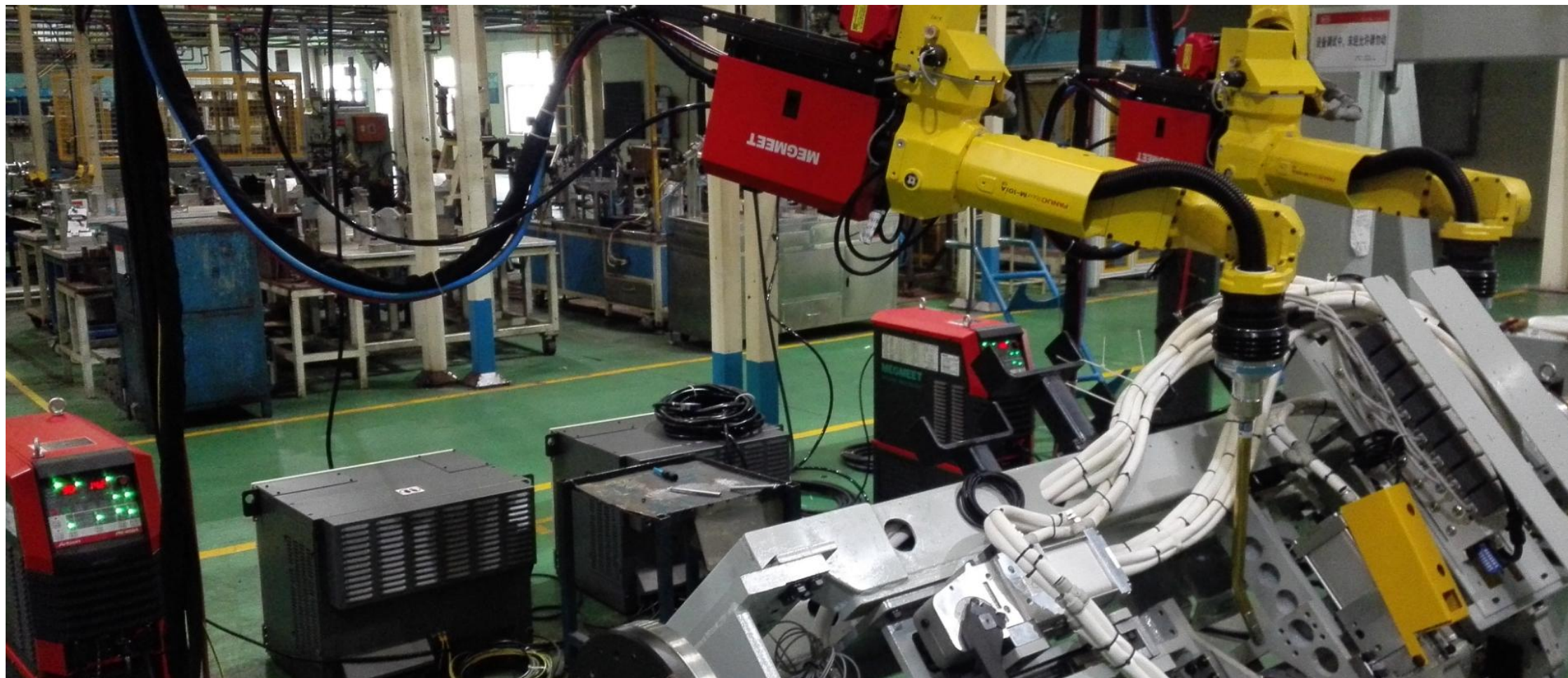


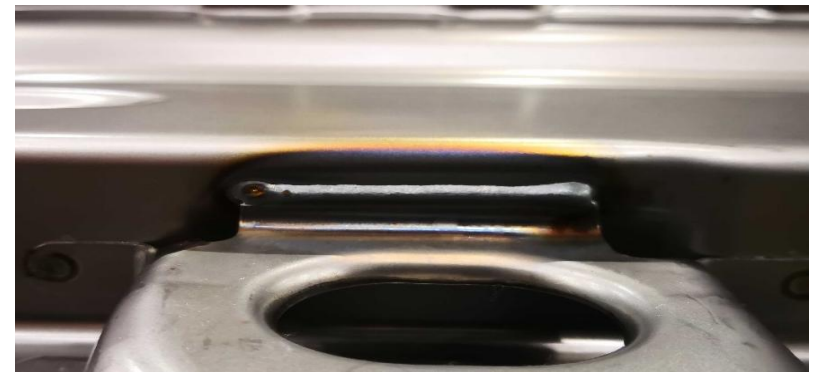


上海汇众









Successful Cases

Sheet Metal - Large Gap Welding

MEGMEET



```
39: WAIT .20(sec)
40:L P[20] 8mm/sec FINE
   : Weld End[1,7]
41:J P[21] 100% CNT100
42:L P[22] 250cm/min FINE
   : Weld Start[1,7]
43: WAIT .20(sec)
44:L P[23] 8mm/sec FINE
   : Weld End[1,7]
45:J P[24] 100% CNT50
46: WAIT 1.00(sec)
```

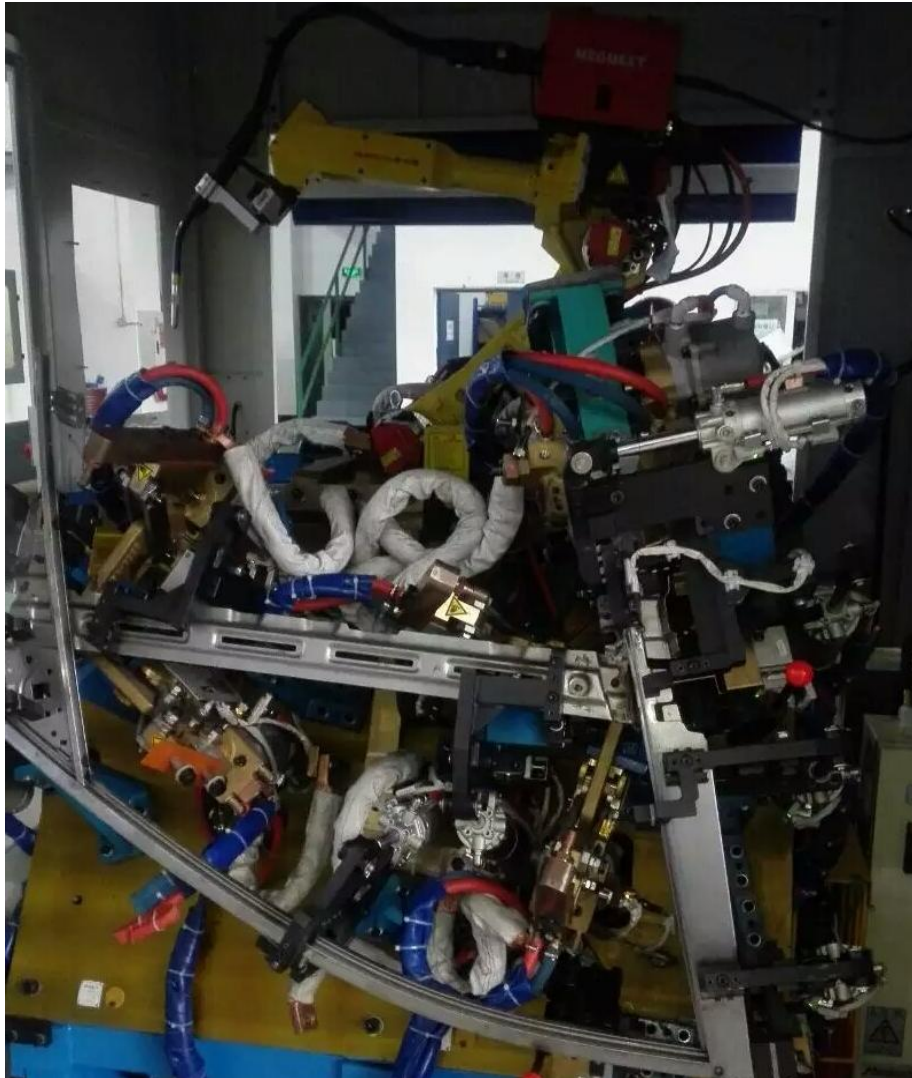
```
45:J P[24] 100% CNT50
46: WAIT 1.00(sec)
47:
48:L P[25] 250cm/min FINE
   : Weld Start[1,8]
49: WAIT .20(sec)
50: Weave Sine[1]
51:L P[26] 8mm/sec CNT20
52: WAIT .50(sec)
53:L P[27] 15mm/sec FINE
   : Weld End[1,8]
```

```
52: WAIT .50(sec)
53:L P[27] 15mm/sec FINE
   : Weld End[1,8]
54: Weave End
55:J P[28] 100% CNT30
56:J P[29] 100% CNT30
57:J P[30] 100% CNT50
58:J P[31] 100% CNT50
59:J P[33] 100% CNT100
60: -WELD (5)
61:L P[34] 250cm/min FINE
```

MEGMEET

 地通控股 (所有 仿冒必究)
DIT HOLDING (司机密 不得公开)

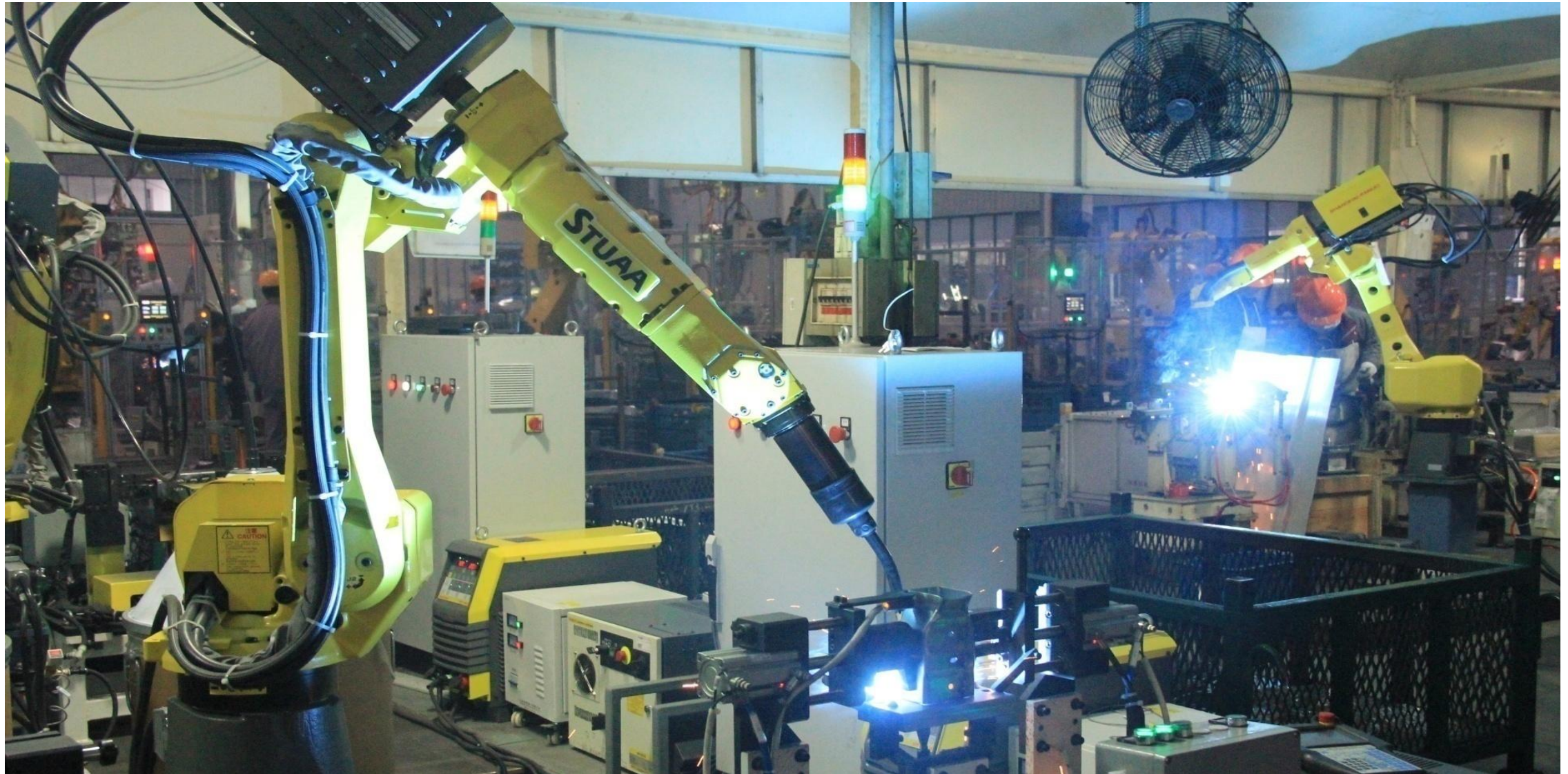




© MEGMEET

ALL rights reserved 版权所有 仿冒必究
Company Confidential 公司机密 不得公开



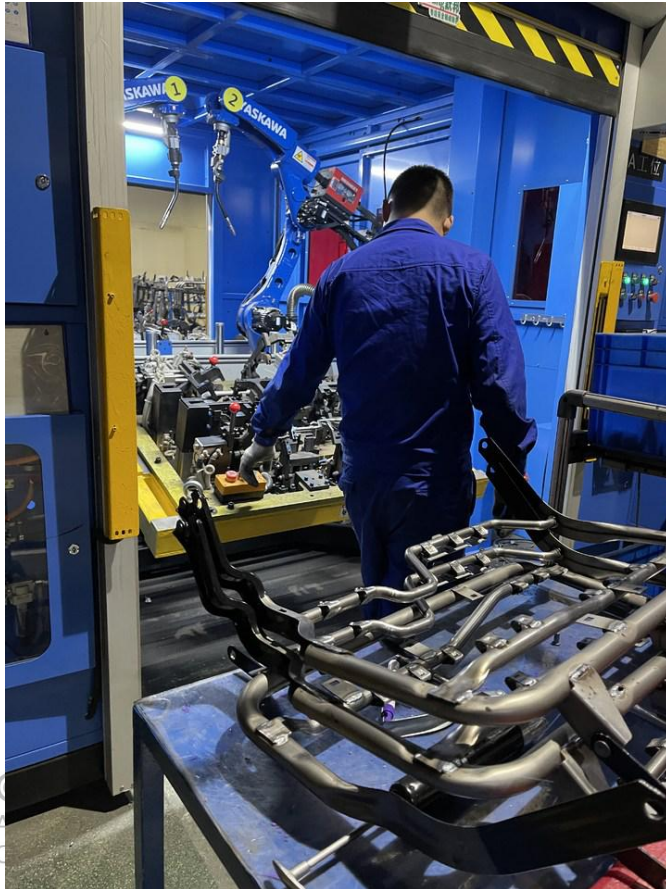
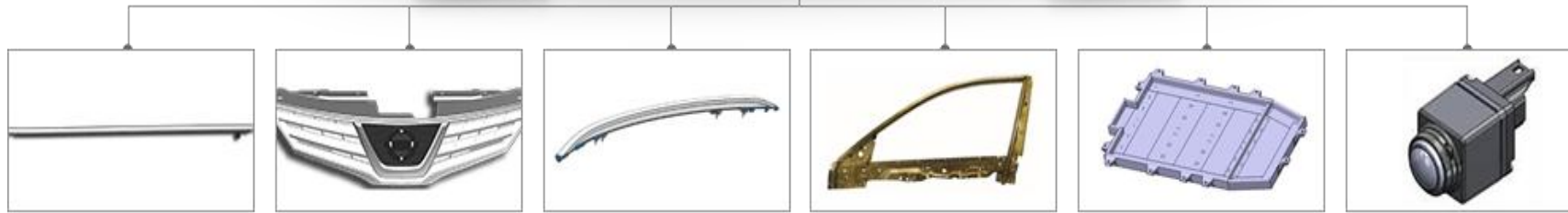




Successful Cases

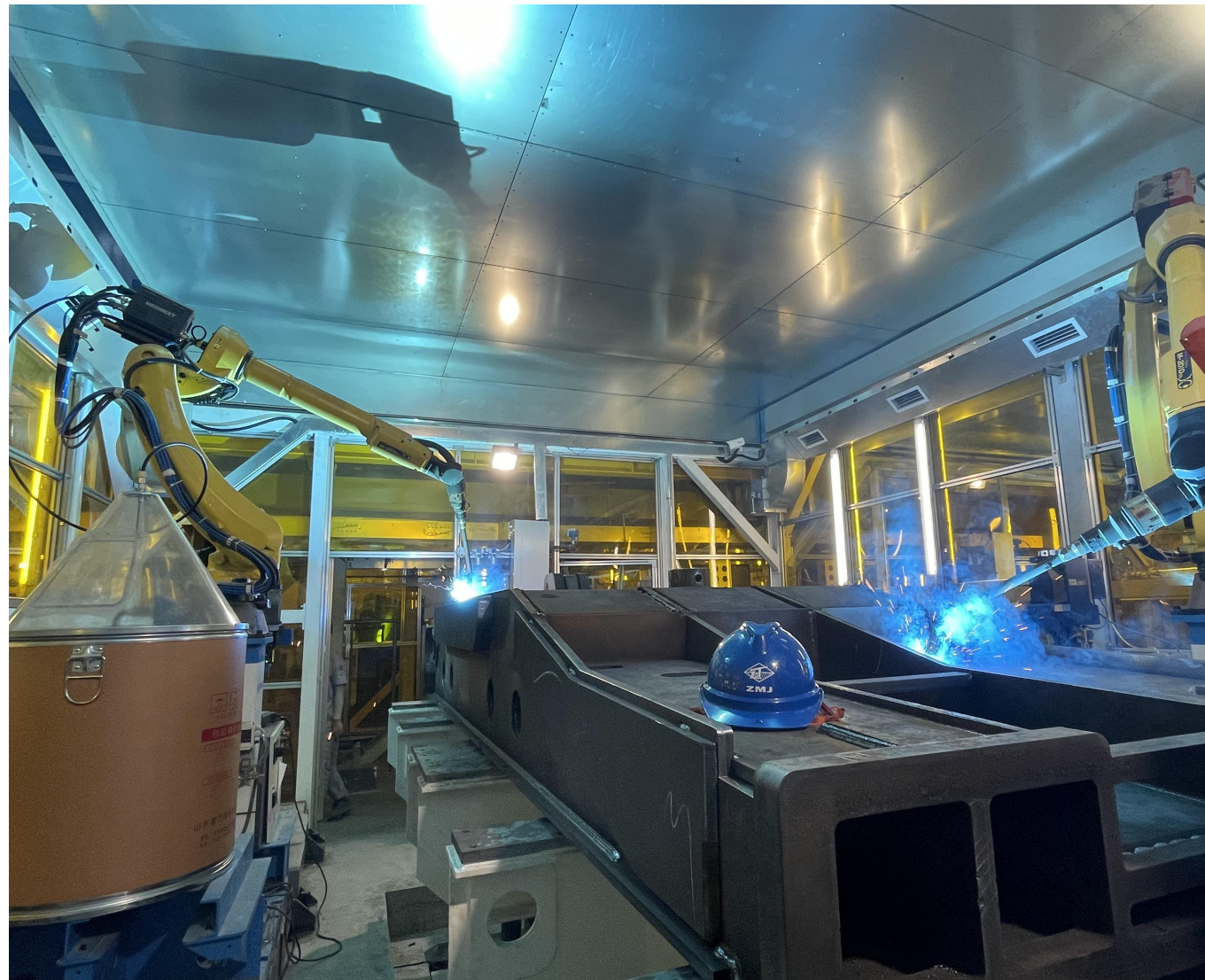


MEGMEET



Successful Cases

Multi-Layer Multi-Pass Process for Mining Machinery MEGMEET



Successful Cases

Concrete Mixer

MEGMEET



Successful Cases

2000+pcs robotic welding machines delivery to CIMC

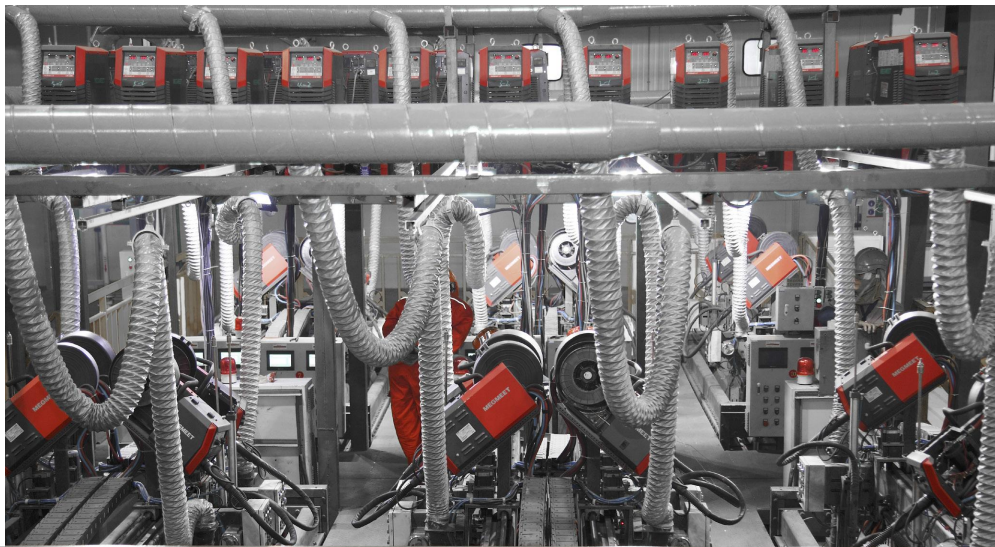
MEGMEET

CIMC



Successful Cases

MEGMEET



© MEGMEET

ALL rights reserved 版权所有 仿冒必究
Company Confidential 公司机密 不得公开

Fuwa

Slide 65

Successful Cases

MEGMEET



ALL rights reserved 版权所有 仿冒必究
Company Confidential 公司机密 不得公开

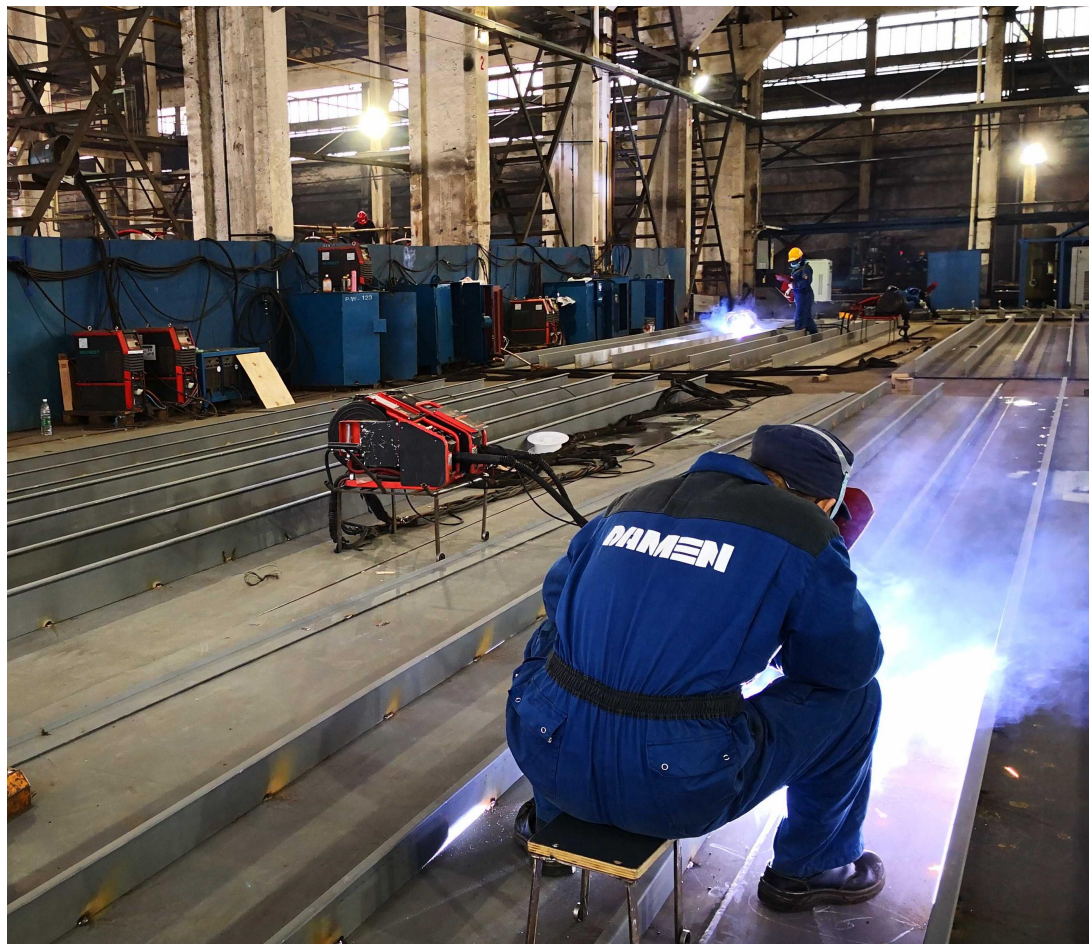
Successful Cases

Construction Machinery – RTTE

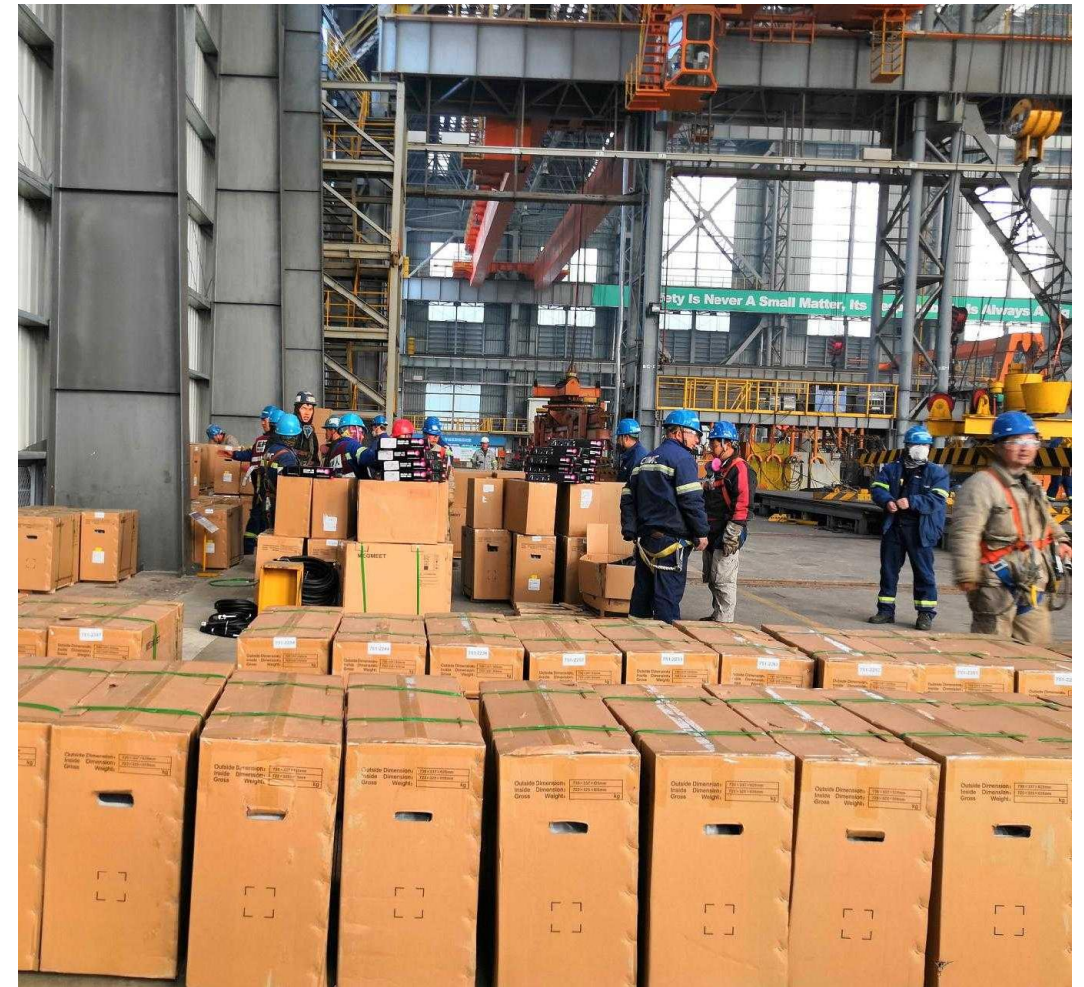
MEGMEET













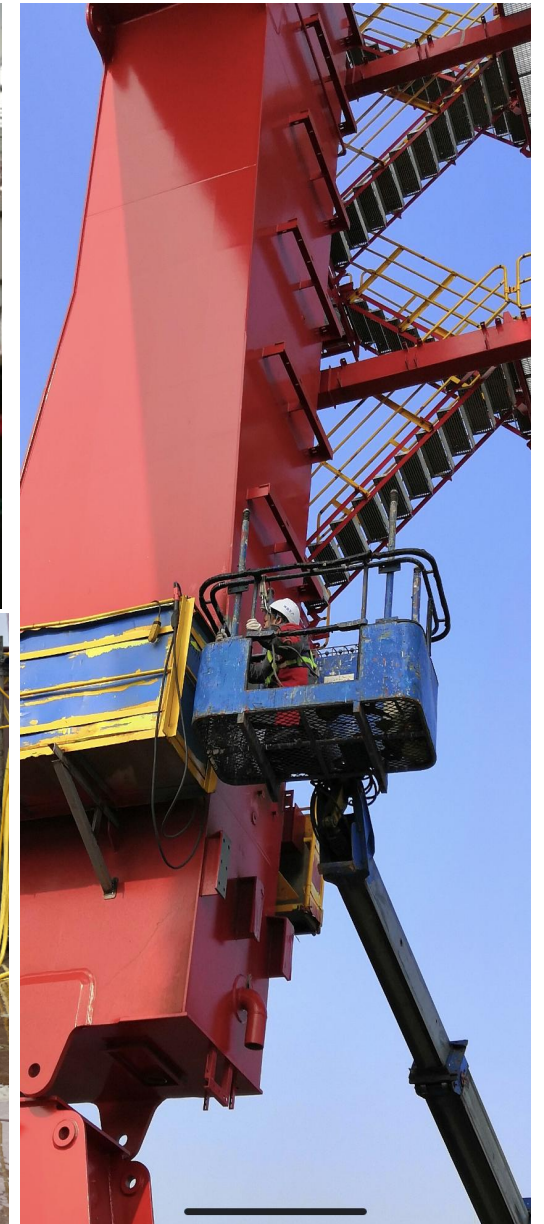
POCO
SHOT ON POCO M2 PRO



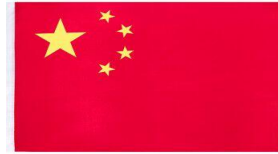
Successful Cases



MEGMEET



MEGMEET Marketing Position in CHINA



MEGMEET

More than 11,000 pcs robotic welding power sources were sold in 2022.
MEGMEET locates No.1 ranking with 30% market share for 7 years consecutively



高工产研 高工机器人	
2022年度工业机器人行业“十宗最”	
描述	企业
2022年中国市场工业机器人整体销量最多的厂商	FANUC
2022年中国国产六轴机器人销量最多的厂商	埃斯顿
2022年中国国产SCARA机器人销量最多的厂商	汇川
2022年中国市场六轴协作机器人销量最多的厂商	遨博智能
2022年中国焊接机器人配套焊接电源销量最多的厂商	麦格米特
2022年中国国产RV减速器销量最多的厂商	环动科技
2022年中国驱控一体系统销量最多的厂商	华成工控
2022年中国电动夹爪销量增速最快的厂商	钧舵机器人
2022年中国3D相机销量最多的厂商	图漾科技
2022年中国锂电模组&PACK段机器人销量最多的厂商	KUKA

数据来源：高工机器人产业研究所（GGII），2023年5月 @高工机器人

ALL rights reserved 版权所有 仿冒必究
Company Confidential 公司机密 不得公开

MEGMEET is No.1 of robotic power source shipment according to GGII official report



Content

MEGMEET profile

MEGMEET welding production

MEGMEET globe case sharing

MEGMEET partnership activity

Factory & On-site Training for MEGMEET partners

MEGMEET



© MEGMEET

ALL rights reserved 版权所有 仿冒必究
Company Confidential 公司机密 不得公开

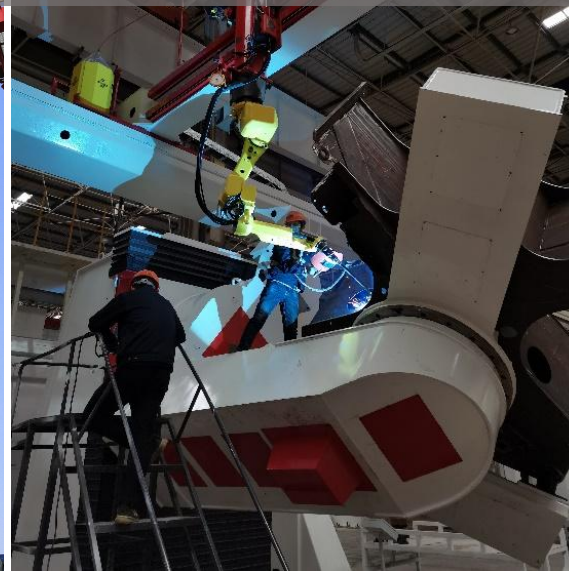
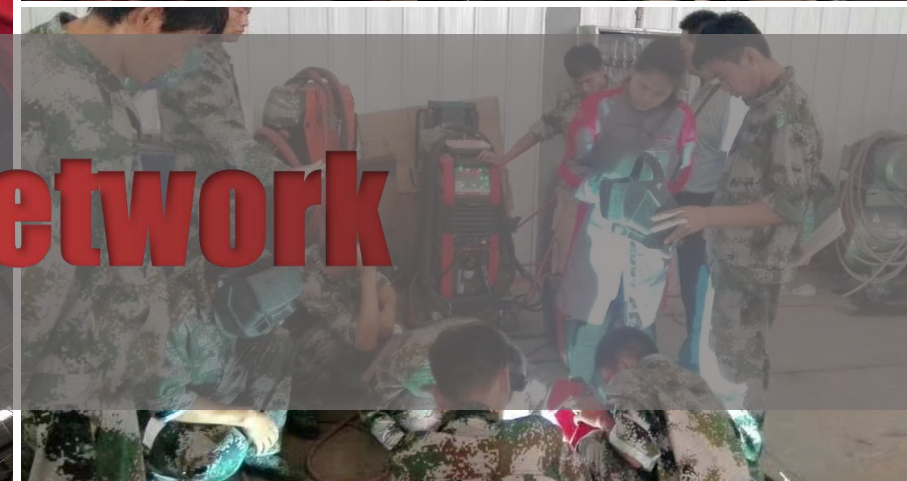
Global Channel Business Conference

MEGMEET





Powerful Service Network



MEGMEET EVERYWHERE

领先 · 开放 · 合作 · 创新